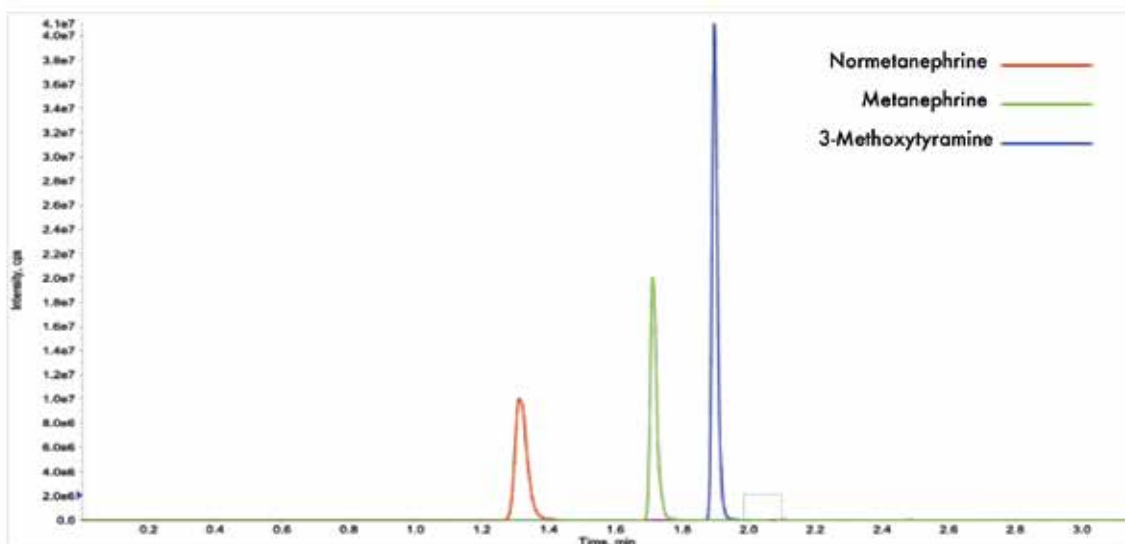


SHORT METHOD DESCRIPTION

FloMass[®] Total Metanephrines in Urine

Metanephrines (Metanephrine, Normetanephrine and 3-Methoxytyramine) are molecules obtained by Catecholamines metabolism (Epinephrine, Norepinephrine and Dopamine) and their amount is linked to pheochromocytoma or others neuroendocrine tumors.



HPLC-MS/MS system conditions

Ionization: ESI positive mode

MS/MS: specific MRM

Injection volume: 1 μ l (variable according to instrumental sensitivity)

Running time: 3.2 min

Column heater: 45°C

Performance

| Analyte | Linearity (ng/mL) | LLOD (ng/mL) | LLOQ (ng/mL) | CV% Intra | CV% Inter |
|-------------------|-------------------|--------------|--------------|-----------|-----------|
| Metanephrine | 0.6 - 8000 | 0.2 | 0.6 | 2.0 - 2.6 | 3.2 - 3.4 |
| Normetanephrine | 1.5 - 16000 | 0.4 | 1.5 | 2.0 - 3.2 | 2.9 - 4.1 |
| 3-Methoxytyramine | 1.1 - 8000 | 0.3 | 1.1 | 1.5 - 1.8 | 3.0 - 3.6 |

ORDERING GUIDE

| Order No. | Description | Quantity |
|-----------------|--|-------------------|
| EUM18100 | FloMass® Total Metanephrines in Urine LC-MS/MS detection | 100 assays |
| | Contents | |
| | Mobile Phase A | 1 x EUM17011 |
| | Mobile Phase B | 1 x EUM17012 |
| | Hidrolyxing Reagent | 1 x EUM18021 |
| | Complexing Reagent | 1 x EUM18022 |
| | pH Corrector Reagent | 1 x EUM18023 |
| | SPE Activating Reagent | 1 x EUM18024 |
| | SPE Conditioning Reagent | 1 x EUM18025 |
| | SPE Washing Reagent | 1 x EUM18026 |
| | SPE Eluting Reagent | 1 x EUM18027 |
| | Internal Standard Mix | 1 x EUM18031 |
| | SPE Columns | 1 x EUM18061 |
| | Separately available components | |
| EUM17011 | Mobile Phase A | 500 ml |
| EUM17012 | Mobile Phase B | 500 ml |
| EUM18021 | Hydrolyzing Reagent | 1.5 ml |
| EUM18022 | Complexing Reagent | 65 ml |
| EUM18023 | pH Corrector Reagent | 25 ml |
| EUM18024 | SPE Activating Reagent | 110 ml |
| EUM18025 | SPE Conditioning Reagent | 110 ml |
| EUM18026 | SPE Washing Reagent | 110 ml |
| EUM18027 | SPE Eluting Reagent | 65 ml |
| EUM18031 | Internal Standard Mix | 2x1 ml |
| EUM18061 | SPE Columns | 100 pcs |
| | Accessory | |
| EUM00C17 | Analytical Column with test chromatogram | 1 pc |
| EUM00A14 | Precolumns | 5 pcs |
| EUM00A15 | Holder (incl. 1 precolumn) | 1 pc |
| EUM17071 | FloTuning Mix A + Mix B Biogenic Amines | 2x2 ml |
| | | |
| EUM17051 | Control Set for Biogenic Amines in Urine, lyoph. (Adrenaline, Noradrenaline, Dopamine, Metanephrine, Normetanephrine, 3-Methoxytyramine, Serotonin, VMA, HVA, 5-HIAA and Creatinine) (2 levels) | 2x2x2 ml |
| | | |
| EUM17041 | Calibrator Set for Cathecolamiones, Metanephrines and Serotonin in Urine, lyoph. (7 levels) | 2x7x1 ml |